

CELLULAR AND MOLECULAR MECHANISMS OF HEMATOPOIESIS

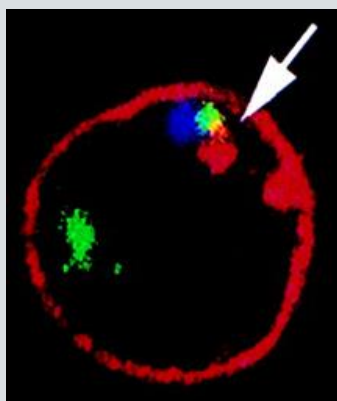
[1993-2012]

- Notch Signaling in Embryonic and Post-Natal Hematopoiesis
- Genes and Chromosomes in the Nucleus of Hematopoietic Cells

READ MORE



READ MORE



TEAM

Leonor Parreira, PI
António Cidadão
Hélia Neves
Isabel Alcobia

Past members:

Ana Jaleco
Ana Sofia Quina
Andreia Gomes
Carlos Ramos
Célia Carvalho
Margarida Telhada
Pedro Saavedra
Ricardo Laranjeiro
Sandro Pereira
Sheila Dias
Tiago Luis

COLLABORATIONS

- Erasmus University, Rotterdam
- Faculdade de Ciências UL
- Faculdade de Medicina Veterinária
- Hospital de Santa Maria
- Instituto de Medicina Molecular
- Instituto Gulbenkian de Ciência
- Instituto Português de Oncologia
- Instituto Superior Técnico

FUNDING

- FCT
- FMUL
- Liga Portuguesa contra o Cancro
- EMBO
- FLAD

EXPERIMENTAL MODELS

- Mouse Embryonic Stem Cells
- Human Cord Blood and Bone Marrow*
- Mouse Fetal Tissues*
- Human and Mouse Cell Lines

* Approved by Ethical Commissions of FMUL and FMVUL

METHODS

- Clonogenic assays
- Confocal Microscopy
- Embryoid Bodies
- Flow cytometry
- Immunocytochemistry
- *In situ* Hybridization
- Quantitative Gene Expression
- Retroviral Gene transduction

PUBLICATIONS

- [The notch ligand delta-like 4 regulates multiple stages of early hemato-vascular development.](#) Laranjeiro R, Alcobia I, Neves H, Gomes AC, Saavedra P, Carvalho CC, Duarte A, Cidadão A, Parreira L. **PLoS One.** 2012;7(4):e34553. doi: 0.1371/journal.pone.0034553.
- [Portrayal of the Notch system in embryonic stem cell-derived embryoid bodies.](#) Alcobia I, Gomes A, Saavedra P, Laranjeiro R, Oliveira S, Parreira L, Cidadão A. **Cells Tissues Organs.** 2011;193(4):239-52. doi: 10.1159/000320572.
- [Notch1 engagement by Delta-like-1 promotes differentiation of B lymphocytes to antibody-secreting cells.](#) Santos MA, Sarmiento LM, Rebelo M, Doce AA, Maillard I, Dumortier A, Neves H, Radtke F, Pear WS, Parreira L, Demengeot J. **Proc Natl Acad Sci U S A.** 2007 Sep 25;104 (39):15454-9.
- [Effects of Delta1 and Jagged1 on early human hematopoiesis: correlation with expression of notch signaling-related genes in CD34+ cells.](#) Neves H, Weerkamp F, Gomes AC, Naber BA, Gameiro P, Becker JD, Lúcio P, Clode N, van Dongen JJ, Staal FJ, Parreira L. **Stem Cells.** 2006 May; 24(5):1328-37
- [Notch and lymphopoiesis: a view from the microenvironment.](#) Parreira L, Neves H, Simões S. **Semin Immunol.** 2003 Apr;15(2):81-9. Review.
- [Differential effects of Notch ligands Delta-1 and Jagged-1 in human lymphoid differentiation.](#) Jaleco AC, Neves H, Hooijberg E, Gameiro P, Clode N, Haury M, Henrique D, Parreira L. **J Exp Med.** 2001 Oct 1;194 (7):991-1002.
- [Telomere-surrounding regions are transcription-permissive 3D nuclear compartments in human cells.](#) Quina AS, Parreira L. **Exp Cell Res.** 2005 Jul 1;307 (1):52-64.
- [The spatial organization of centromeric heterochromatin during normal human lymphopoiesis: evidence for ontogenically determined spatial patterns.](#) Alcobia I, Quina AS, Neves H, Clode N, Parreira L. **Exp Cell Res.** 2003 Nov 1;290 (2):358-69
- [Spatial associations of centromeres in the nuclei of hematopoietic cells: evidence for cell-type-specific organizational patterns.](#) Alcobia I, Dillão R, Parreira L. **Blood.** 2000 Mar 1;95(5):1608-15.
- [PML-RARA fusion transcripts in irradiated and normal hematopoietic cells.](#) Quina AS, Gameiro P, Sá da Costa M, Telhada M, Parreira L. **Genes Chromosomes Cancer.** 2000 Nov;29(3):266-75.
- [The nuclear topography of ABL, BCR, PML, and RARalpha genes: evidence for gene proximity in specific phases of the cell cycle and stages of hematopoietic differentiation.](#) Neves H, Ramos C, da Silva MG, Parreira A, Parreira L. **Blood.** 1999 Feb 15; 93(4):1197-207 (cover page).
- [The spatial distribution of human immunoglobulin genes within the nucleus: evidence for gene topography independent of cell type and transcriptional activity.](#) Parreira L, Telhada M, Ramos C, Hernandez R, Neves H, Carmo-Fonseca M. **Hum Genet.** 1997 Oct; 100(5-6):588-94.
- [The topography of chromosomes and genes in the nucleus.](#) Carmo-Fonseca M, Cunha C, Custódio N, Carvalho C, Jordan P, Ferreira J, Parreira L. **Exp Cell Res.** 1996 Dec 15;229 (2):247-52. Review.
- [Influence of transcription and replication on the in situ resolution of immunoglobulin heavy-chain constant region genes: an interphase cytogenetics analysis.](#) Telhada M, Carvalho C, Carmo-Fonseca M, Parreira L. **Hum Genet.** 1995 Nov; 96(5):552-61.
- [In situ visualisation of immunoglobulin genes in normal and malignant lymphoid cells.](#) Carvalho C, Telhada M, do Carmo-Fonseca M, Parreira L. **Clin Mol Pathol.** 1995 Jun; 48(3):M158-64.