

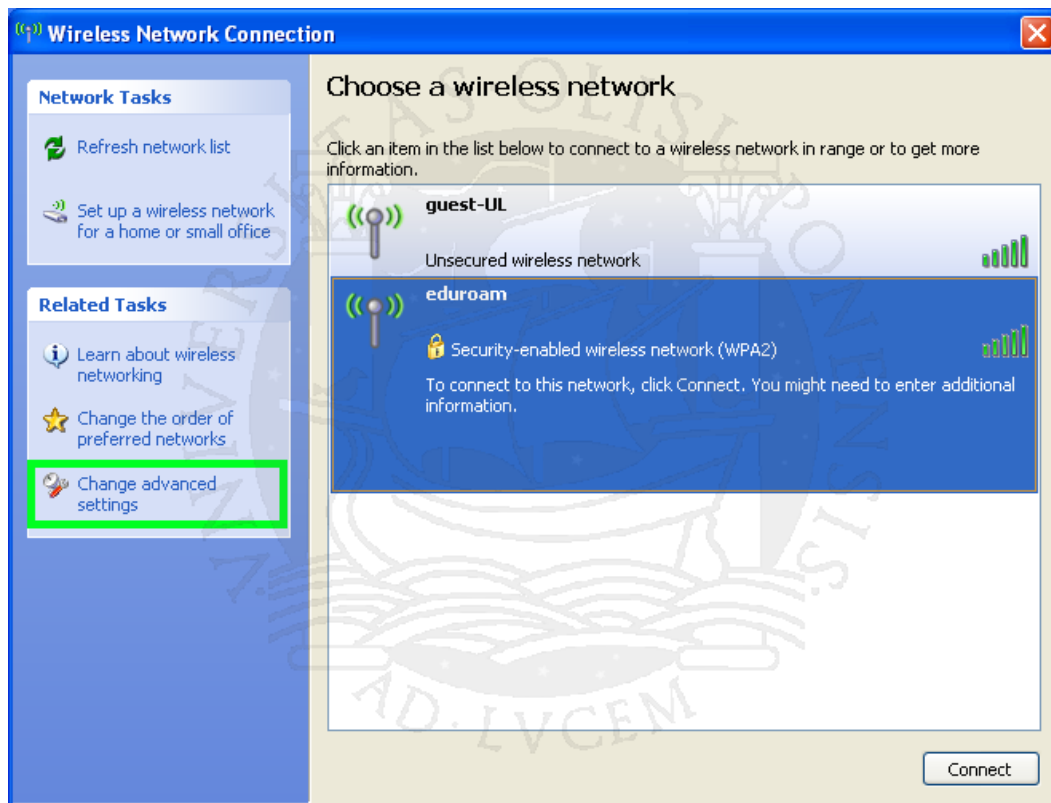
Manual de configuração para a rede sem fios “eduroam”

Windows 7 sem certificado

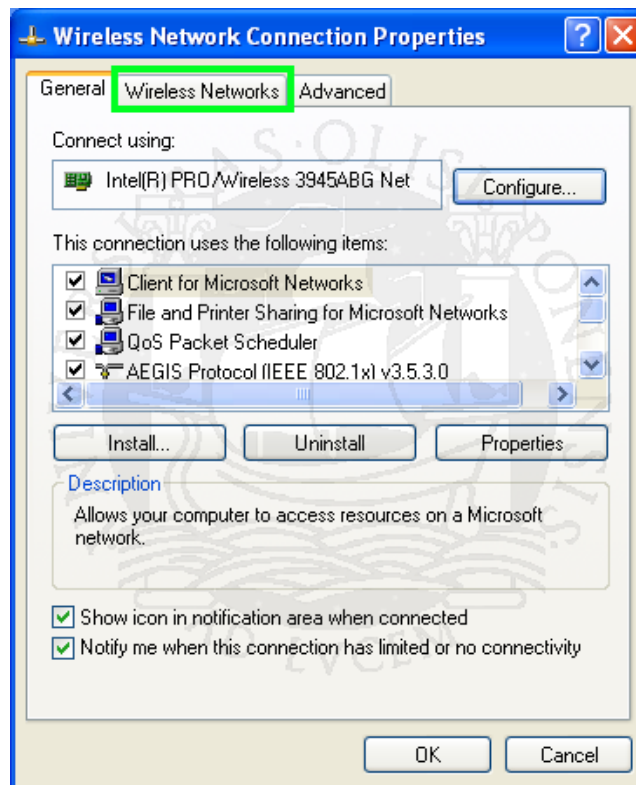
1. Execute o duplo clique sobre o ícone das ligações sem fios



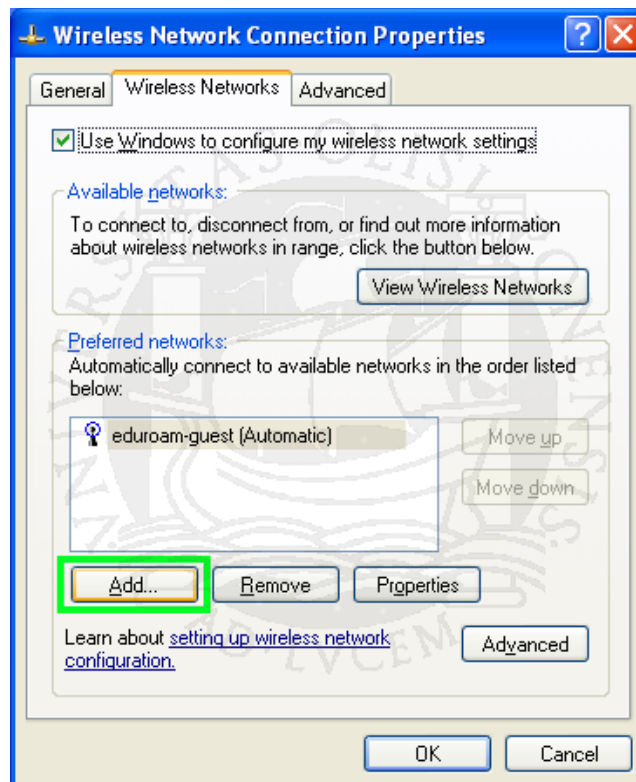
2. Selecionar “Change advanced settings”



3. Seleção o separador “Wireless Networks”

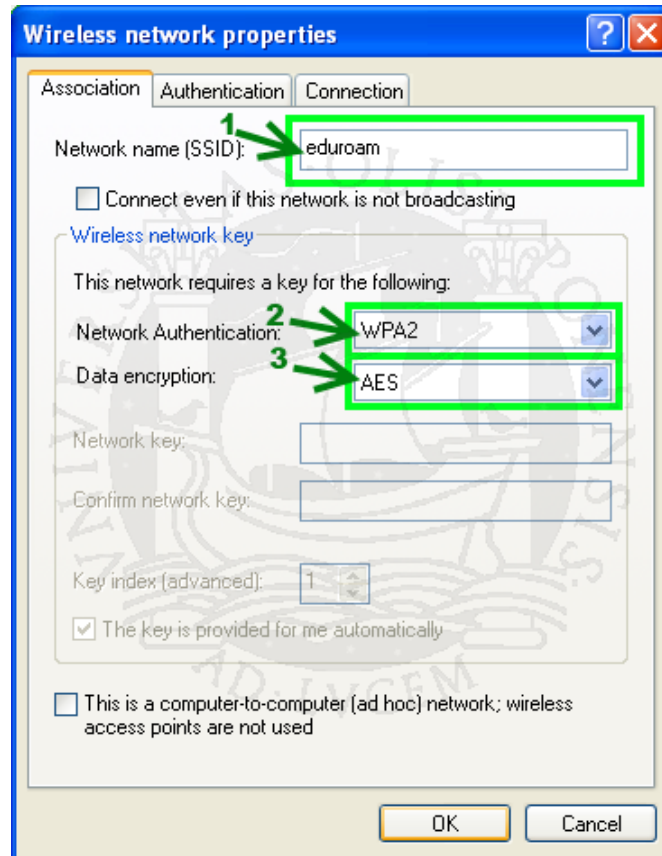


4. Prima o botão “add”

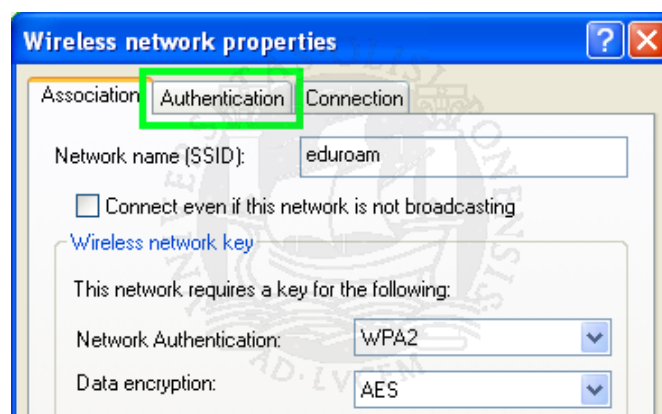


5. Configure associação

1. Network name (SSID): eduroam
2. Network Authentication: WPA2
3. Data encryption: AES

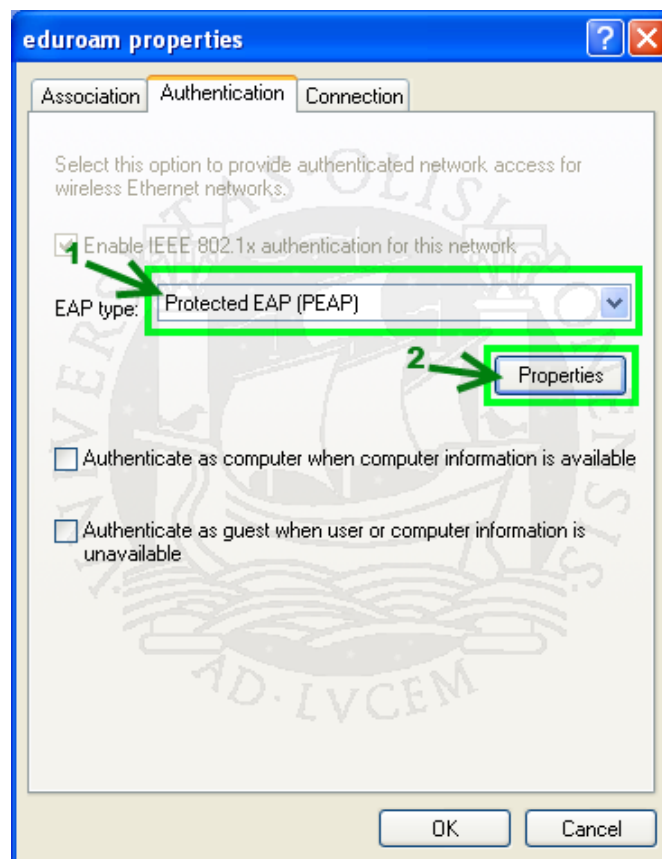


6. Selecione o separador de autenticação

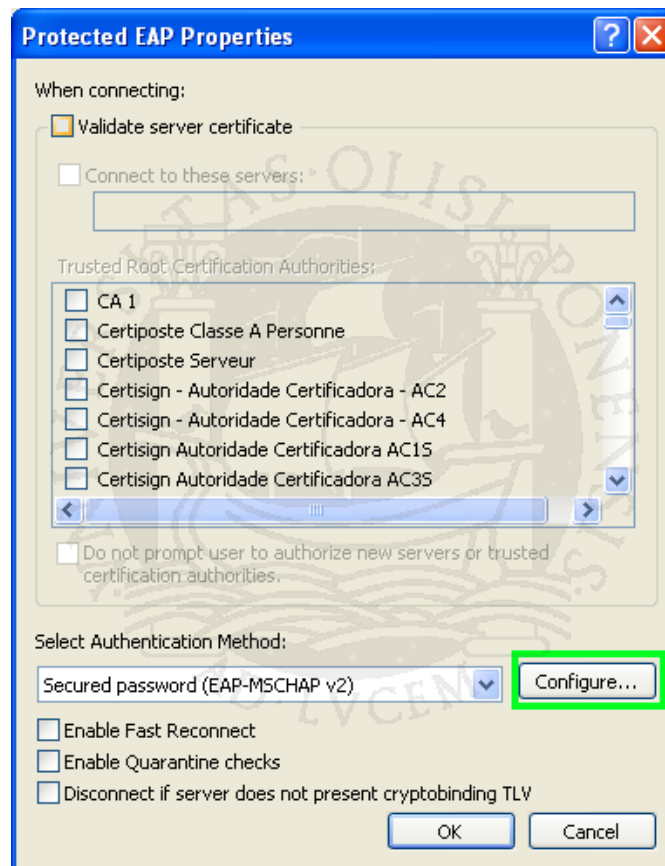


7. Propriedades:

1. Selecione o tipo de EAP "Protected EAP (PEAP)"
2. Abra a janela das propriedades EAP através do botão "Properties"



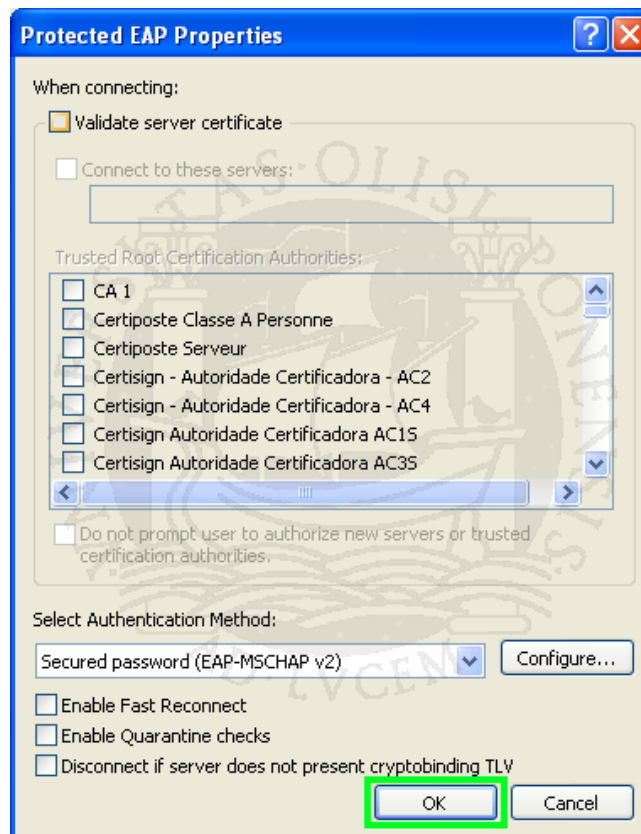
8. Deseleccione todas as caixas de verificação e prima “Configure...”



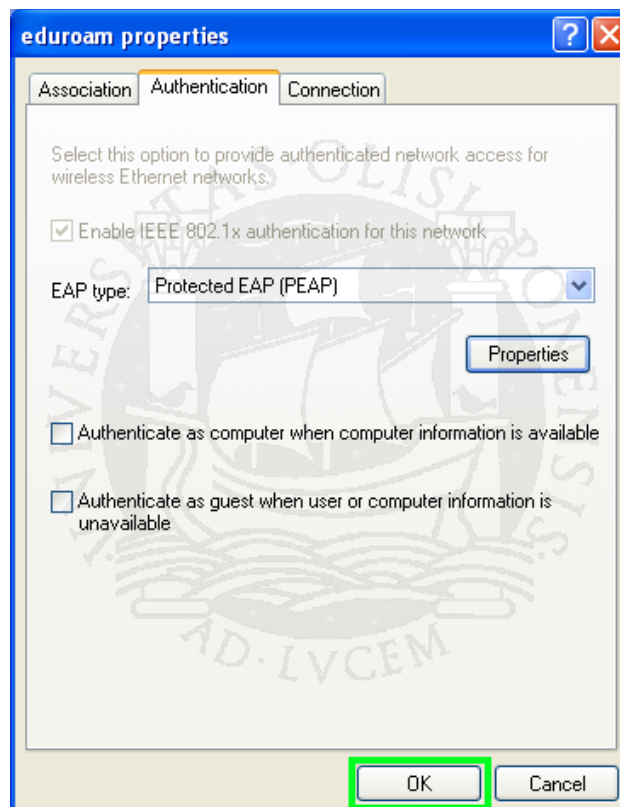
9. Deseleccione a caixa de verificação e clique “OK”



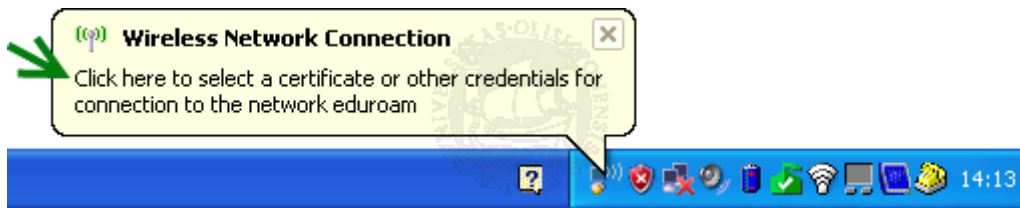
10. Clique "OK"



11. Clique "OK"



12. Clique sobre o balão de informação



13. Insira as suas credenciais de acesso e clique "OK"



14. Note a existência do ícone com ligação à rede

