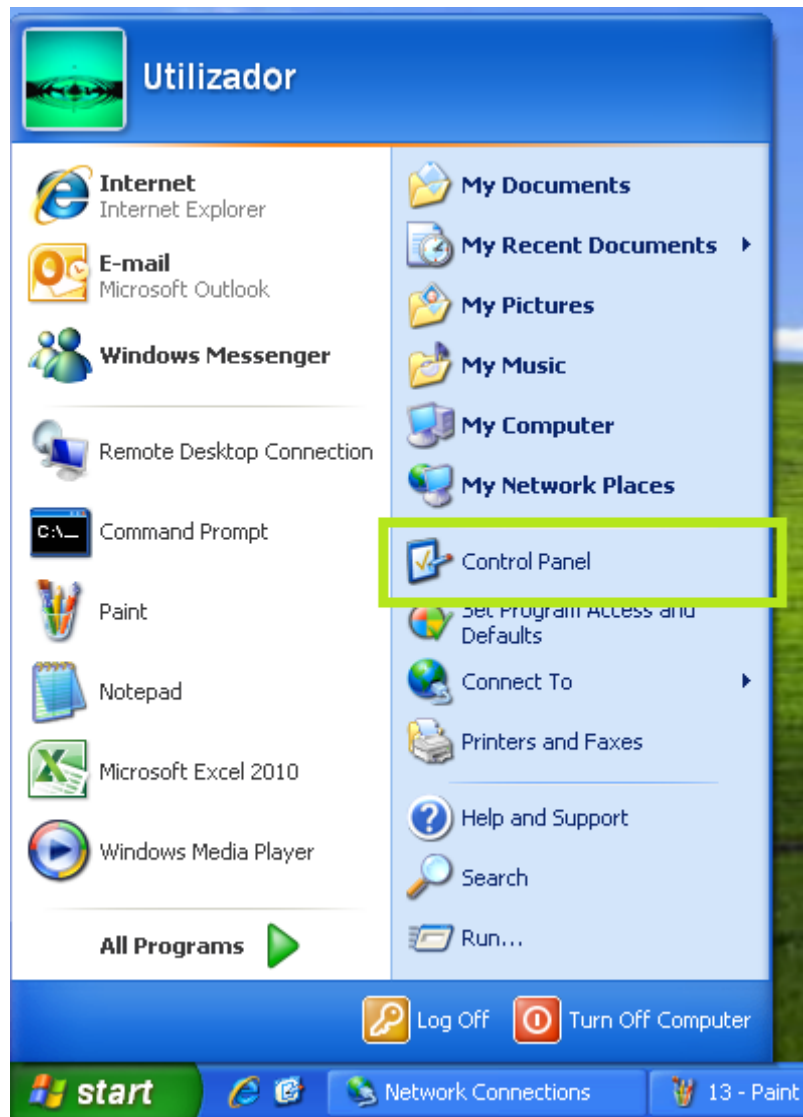
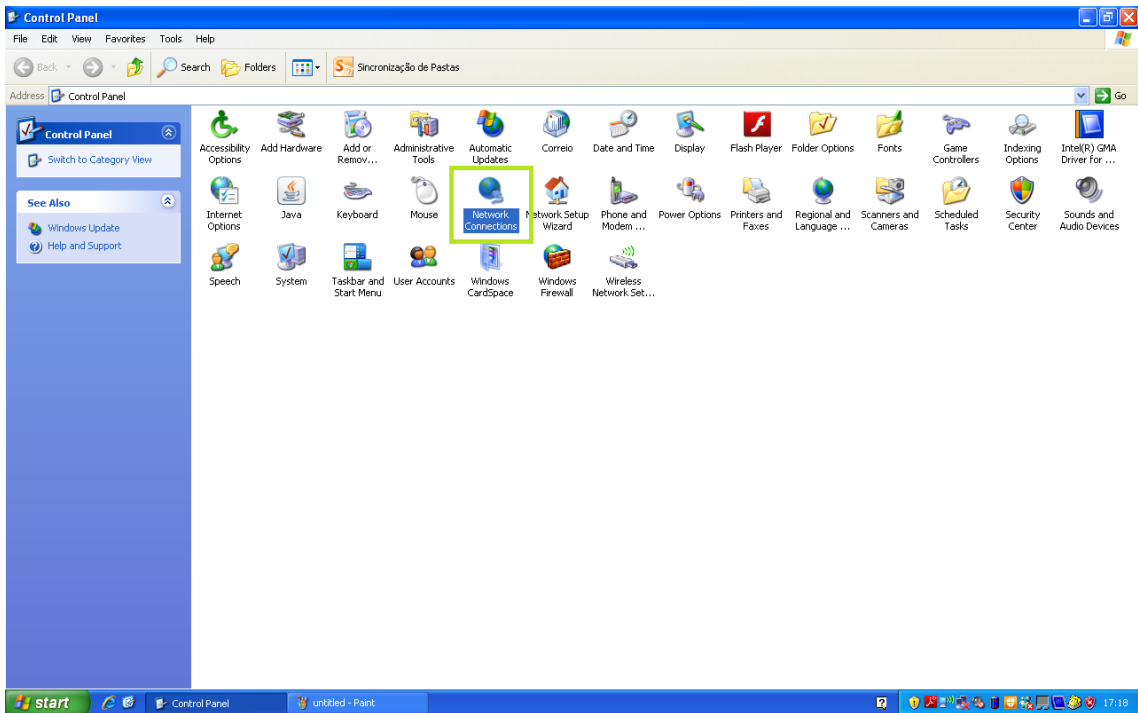


Manual de configuração de VPN L2TP em Windows XP

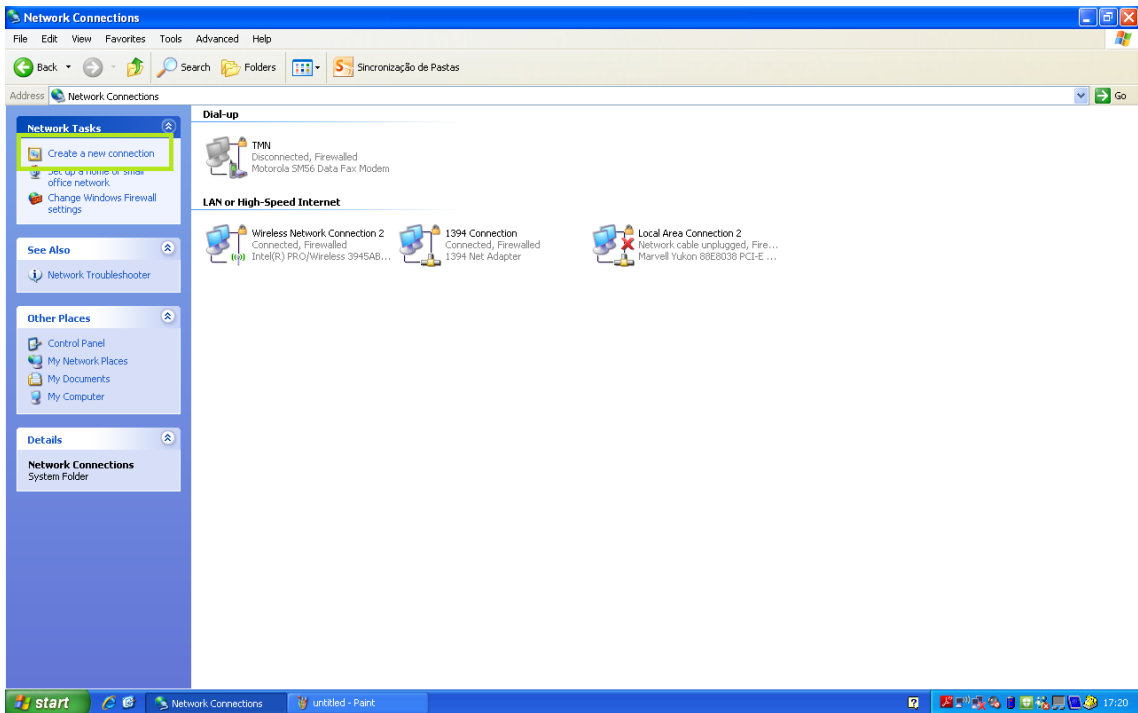
1. Abrir o “Control Panel”:



2. Selecionar “Network Connections”



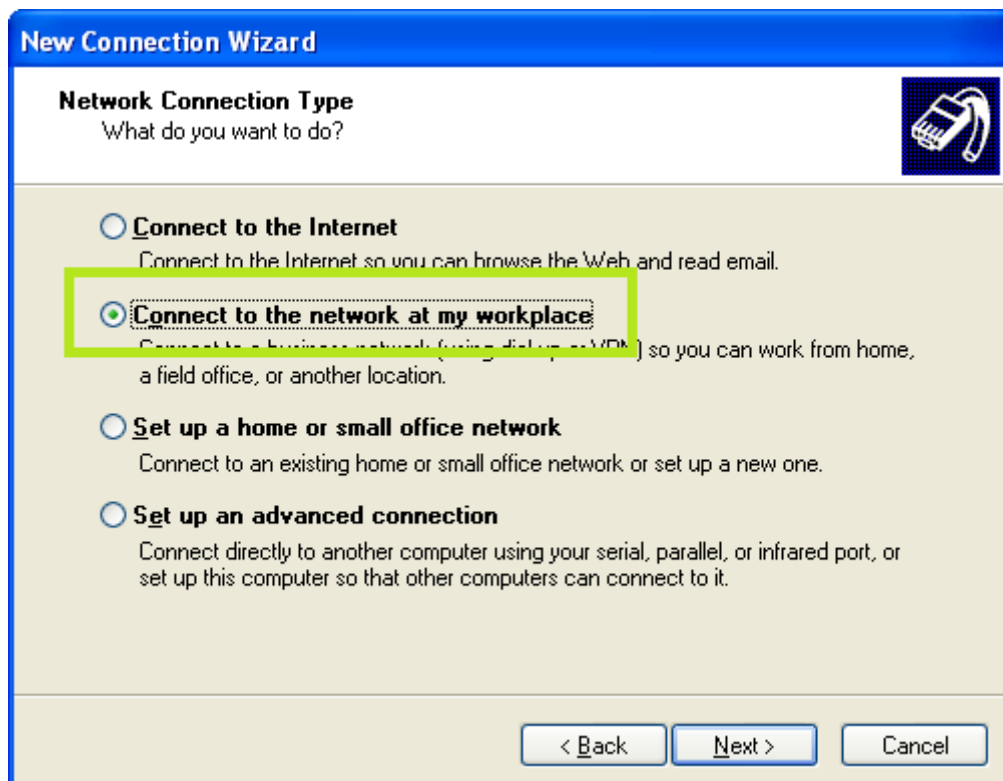
3. Clique em “Create new connection”



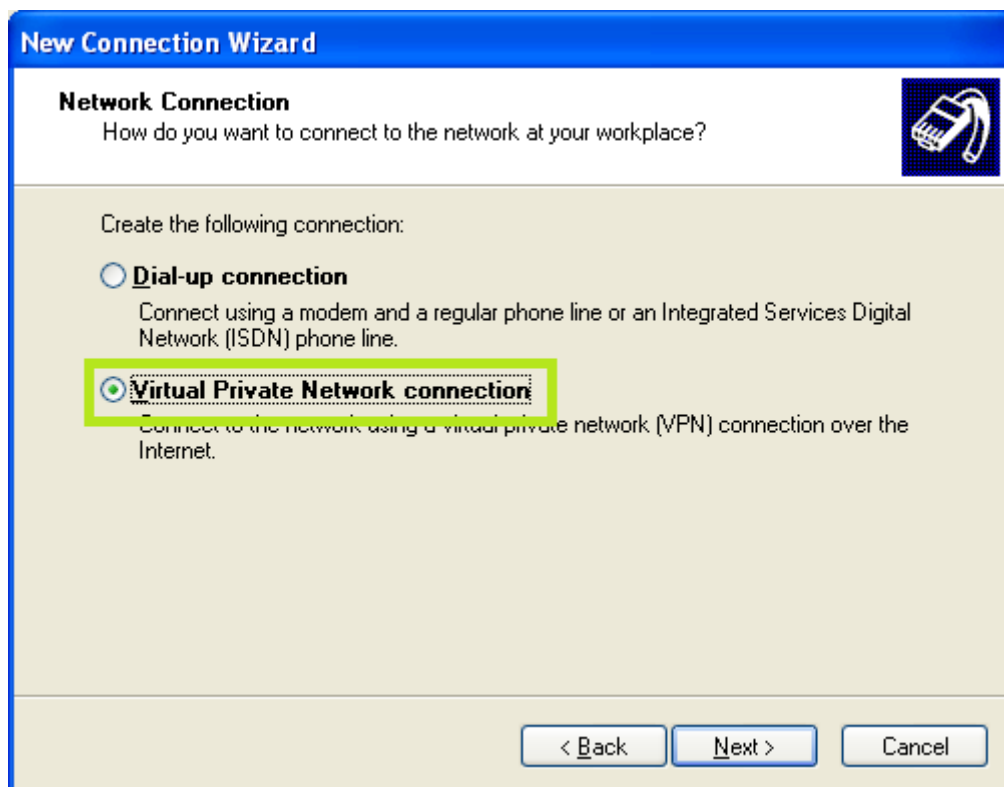
4. Clique em “Next”



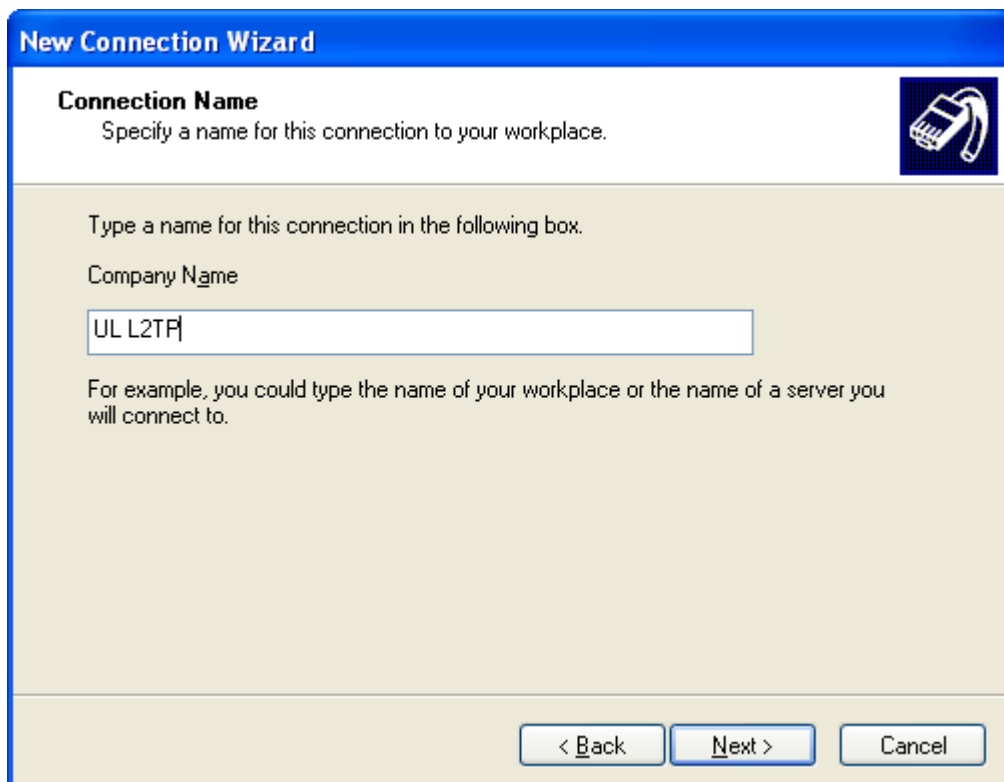
5. Clique em “Connect to the network at my workplace” e de seguida em “Next”



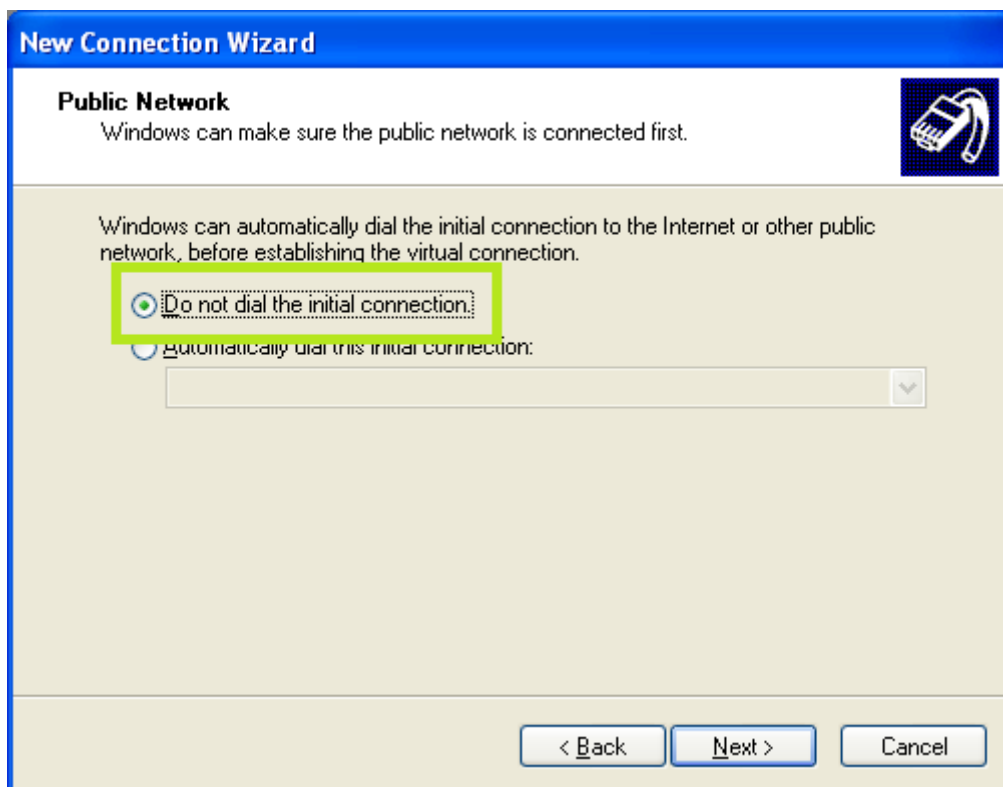
6. Clique em “Virtual Private Network connection” e de seguida em “Next”



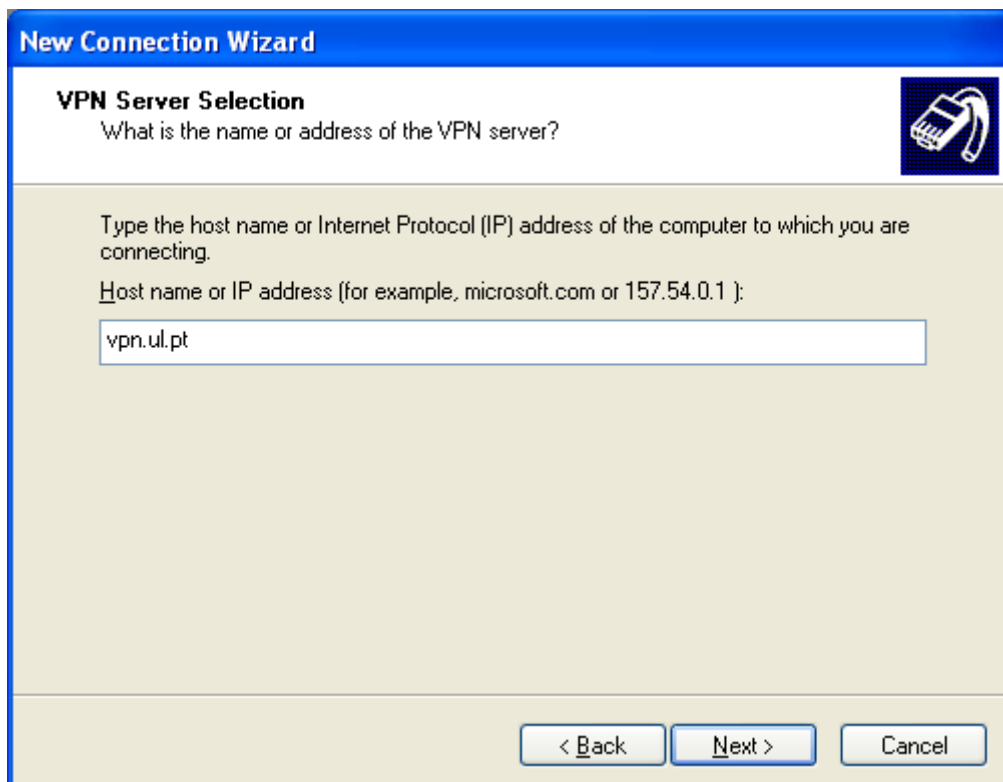
7. Insira um nome para a ligação, por exemplo, “UL L2TP”. De seguida clique em “Next”.



8. Clique em “Do not dial the initial connection”



9. Coloque o endereço do servidor VPN: **vpn.ul.pt**. De seguida clique em “Next”.



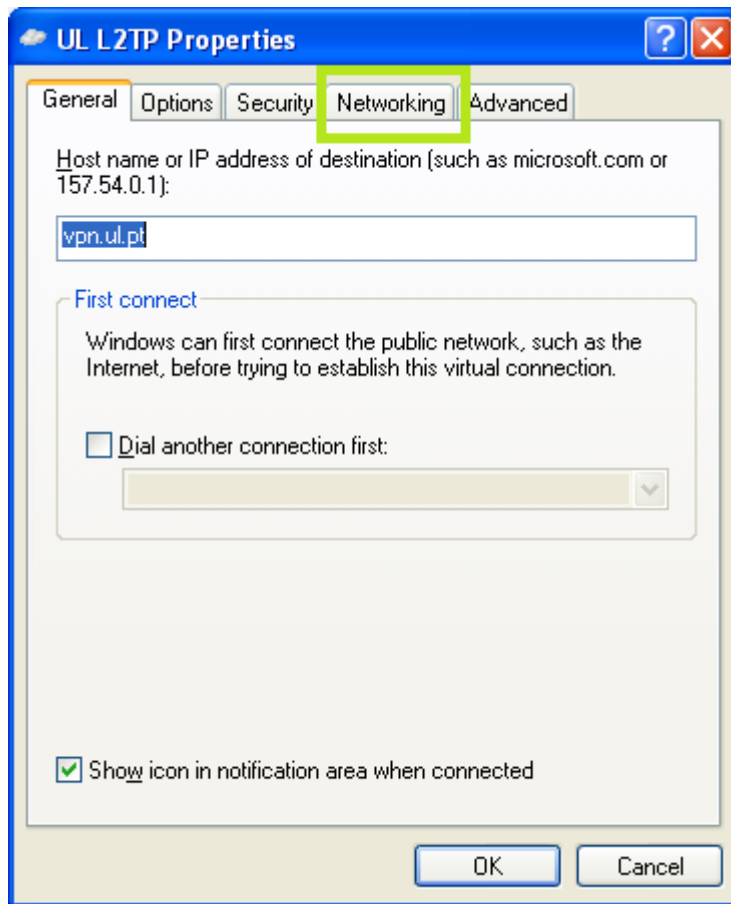
10. Clique em “Next”.



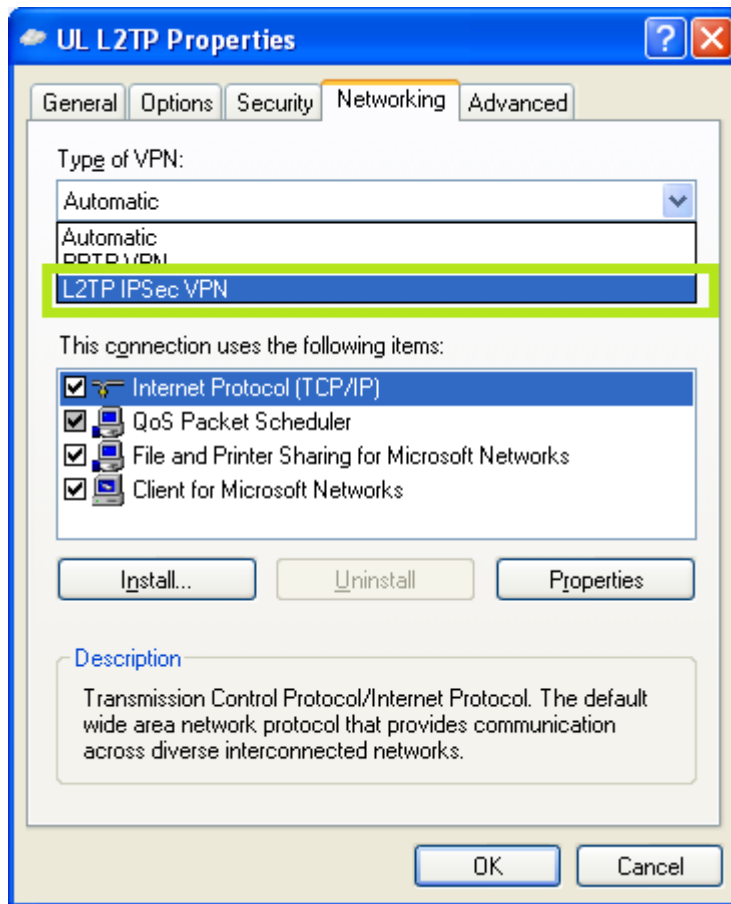
11. Clique em “Properties”



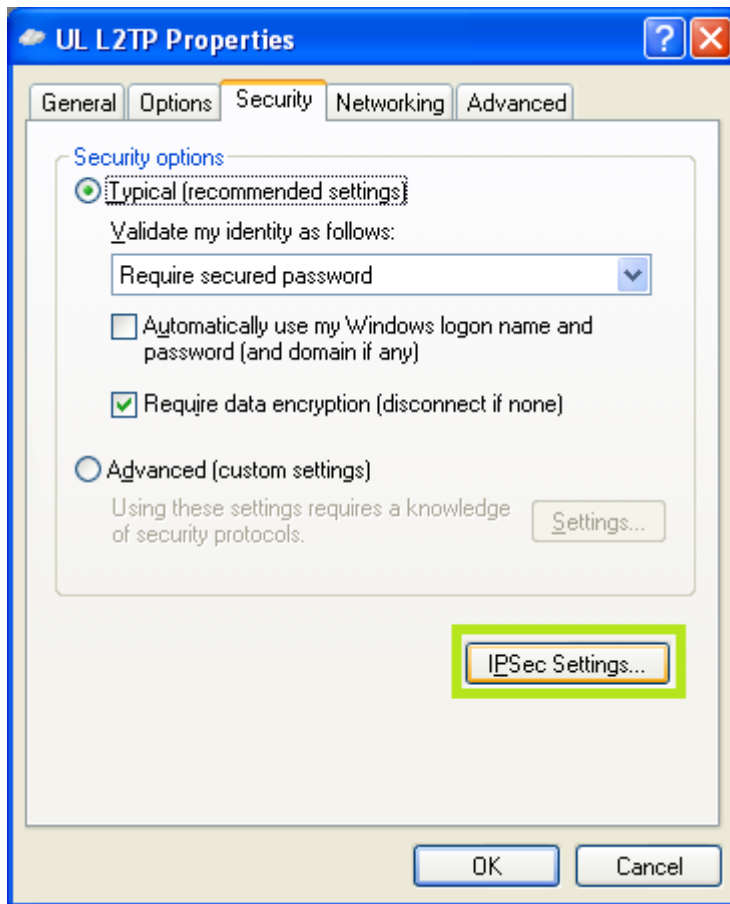
12. Clique no separador “Networking”



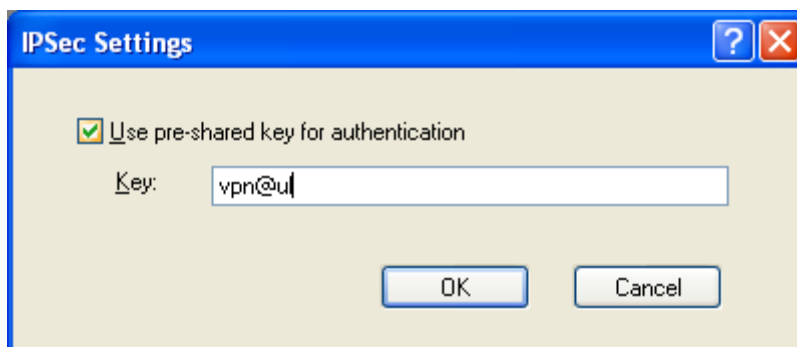
13. No "Type of VPN" selezione "L2TP IPsec VPN"



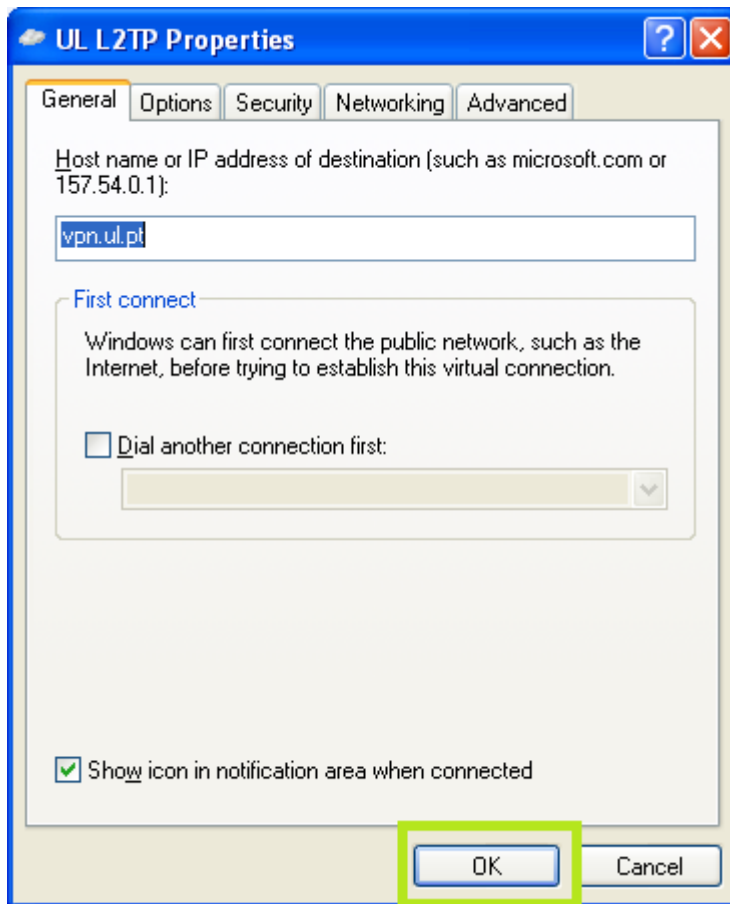
14. No separador “Security”, clique em “IPSec Settings”



15. Active a checkbox e insira no campo a chave **vpn@ul**. De seguida clique em “Ok”.



16. Clique em “Ok”



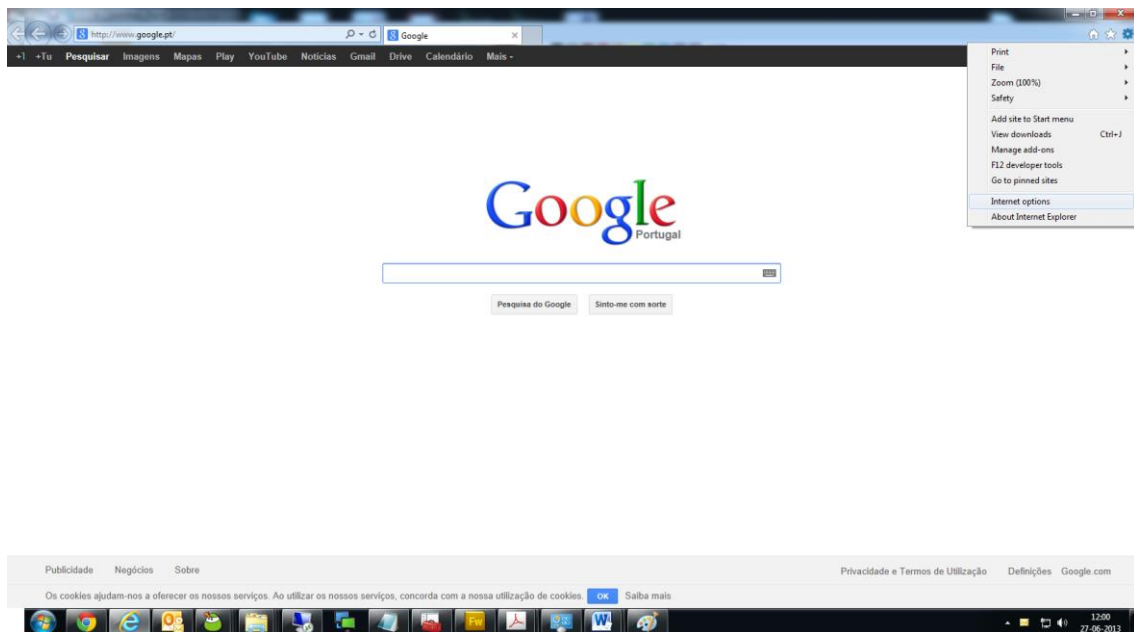
17. Insira as suas credenciais de acesso, por exemplo, utilizador@campus.ul.pt e password. De seguida clique em “Connect”



18. A ligação encontra-se estabelecida



19. VPN Ligada fica a faltar a configuração do Internet Explorer para acesso às bases dados. Basta abrir o Internet Explorer e carregar no botão das ferramentas e escolher a opção internet options.



20. Escolhemos o separador Connections, selecionamos a ligação VPN já definida e clicamos no botão Settings. Ao surgir-nos a imagem do lado direito é necessário clicar na 2ª opção "Use automatic configuration Script" e em adress Colocar: <http://proxy.fm.ul.pt:8080/array.dll?Get.Routing.Script> Por fim basta colocar as credenciais em baixo.

